

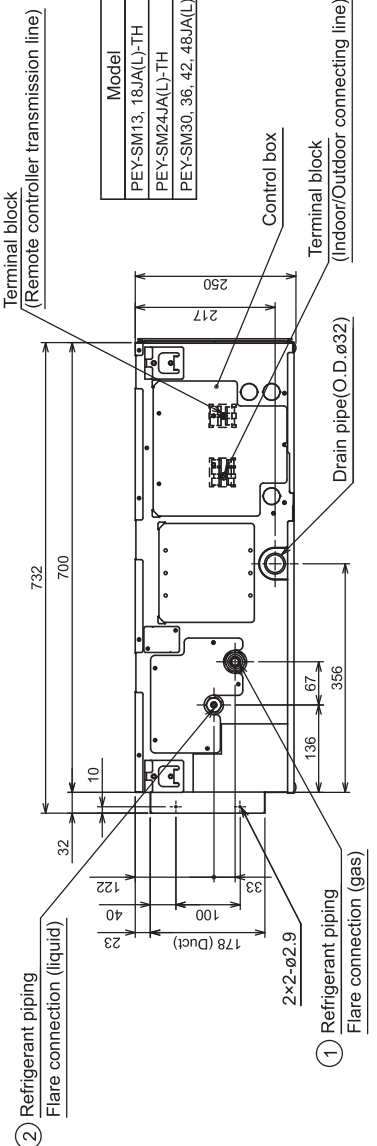
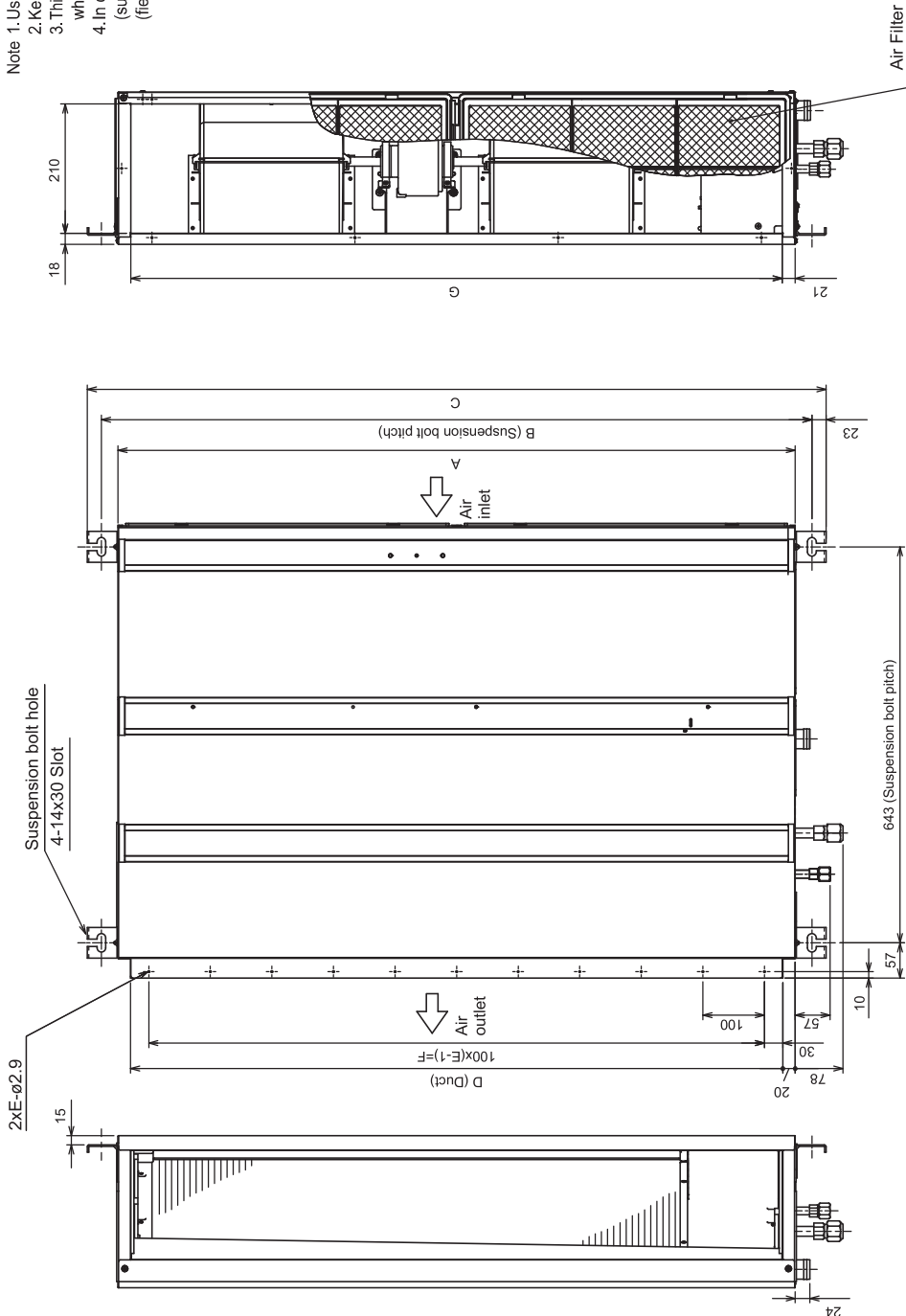
[1] Outlines & Dimensions

INDOOR UNIT

Unit: mm

PEY-SM13, 18, 24, 30, 36, 42, 48JA(L)-TH

- Note 1. Use M10 screw for the Suspension bolt (field supply).
- 2. Keep the service space for the maintenance at the bottom.
- 3. This chart indicates for PEY-SM24, 30, 36, 42, 48JA(L) models, which have 2 fans. PEY-SM13, 18JA(L) models have 1 fan.
- 4. In case of the inlet duct is used, remove the air filter (supply with the unit), then install the filter (field supply) at suction side.



Model	A	B	C	D	E	F	G	① Gas pipe	② Liquid pipe
PEY-SM13, 18JA(L)-TH	900	954	1000	860	9	800	858	ø12.7	ø6.35
PEY-SM24JA(L)-TH	1100	1154	1200	1060	11	1000	1058	ø15.88	ø9.52
PEY-SM30, 36, 42, 48JA(L)-TH	1400	1454	1500	1360	14	1300	1358		

[Maintenance access space]
 Secure enough access space to allow for the maintenance, inspection, and replacement of the motor, fan, heat exchanger, and electric box in one of the following ways.
 Select an installation site for the indoor unit so that its maintenance access space will not be obstructed by beams or other objects.

- (1) When a space of 300mm or more is available below the unit between the unit and the ceiling. (Fig.1)
 - Create access door 1 and 2 (450x450mm each) as shown in Fig.2.
 - (Access door 2 is not required if enough space is available below the unit for a maintenance worker to work in.)
- (2) When a space of less than 300mm is available below the unit between the unit and the ceiling. (At least 20mm of space should be left below the unit as shown in Fig.3.)
 - Create access door 1 diagonally below the electric box and access door 3 below the unit as shown in Fig.4.
 - or
 - Create access door 4 below the electric box and the unit as shown in Fig.5.

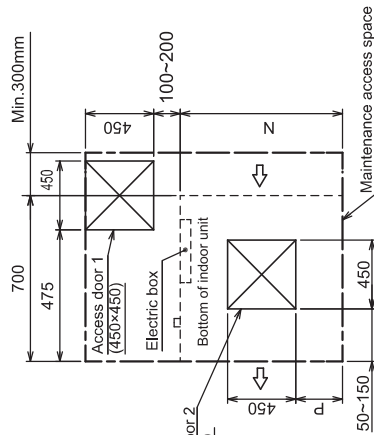
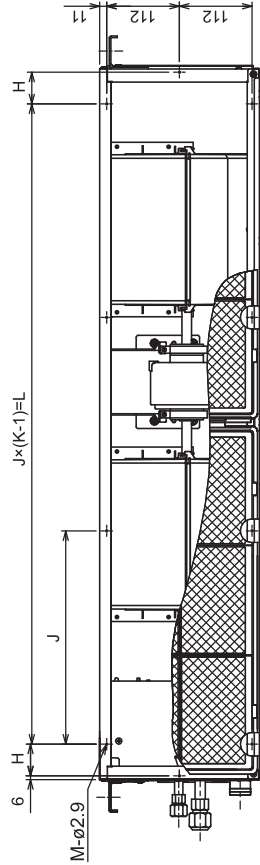


Fig.2 (Viewed from the direction of the arrow A)

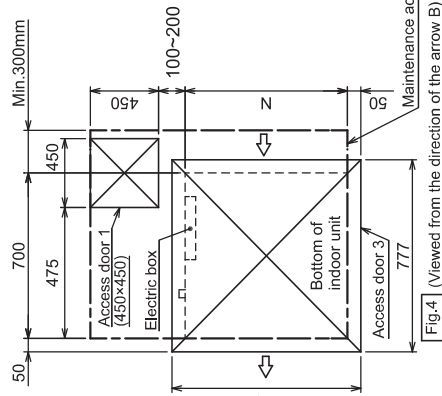


Fig.4 (Viewed from the direction of the arrow B)

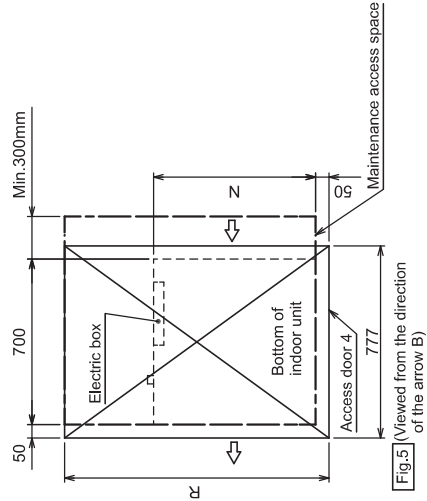


Fig.5 (Viewed from the direction of the arrow B)

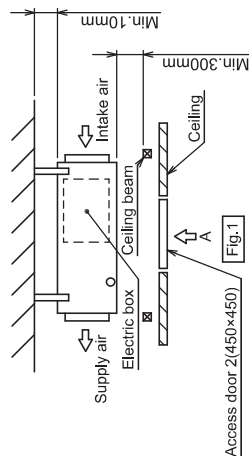


Fig.1

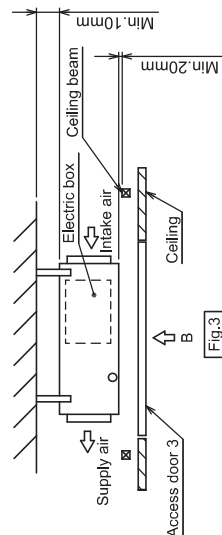


Fig.3

Model	H	J	K	L	M	N	P	Q	R
PEY-SM13, 18JA(L)-TH	54	260	4	780	10	900	150~250	1000	1500
PEY-SM24JA(L)-TH	49	330	4	990	10	1100	250~350	1200	1700
PEY-SM30, 36, 42, 48JA(L)-TH	54	320	5	1280	12	1400	400~500	1500	2000