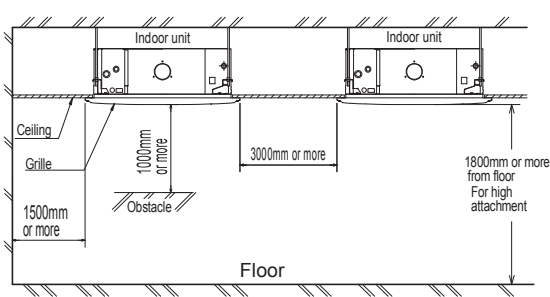
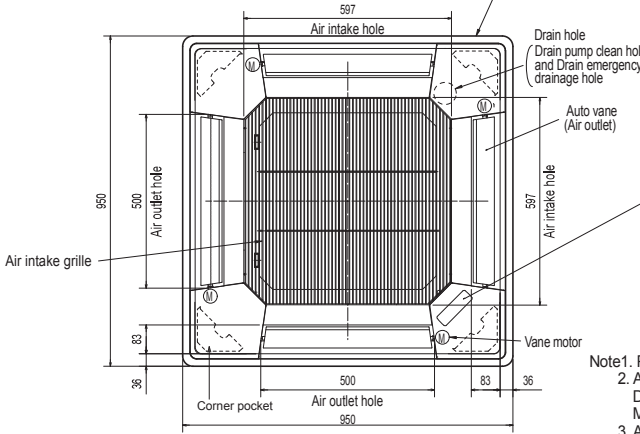
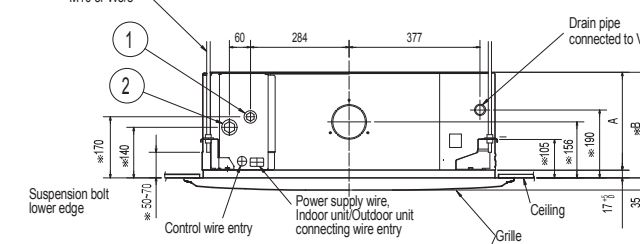
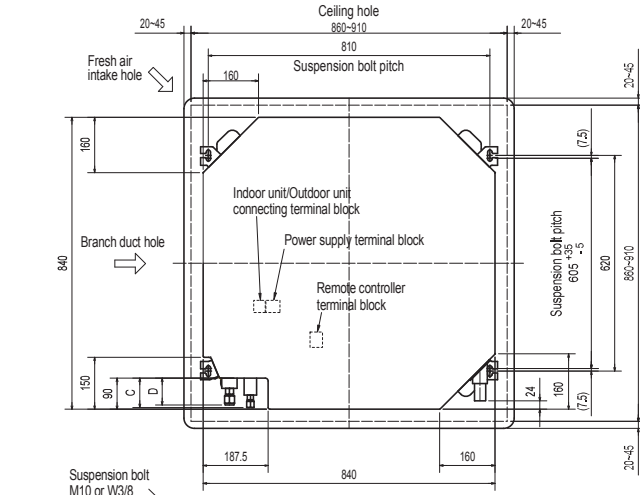


PL-P18BAK.TH-T
PL-P36BAK.TH-T

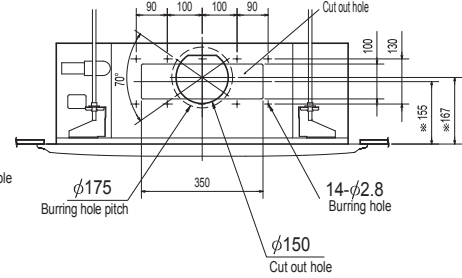
PL-P24BAK.TH-T
PL-P42BAK.TH-T

PL-P30BAK.TH-T
PL-P48BAK.TH-T

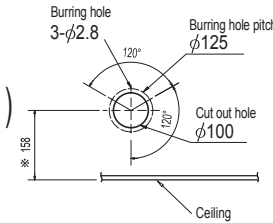
Unit: mm



Detail connecting of branch duct (Both aspects)



Detail drawing of fresh air intake hole



(Connected the attached flexible pipe or socket.)
Keep approximately 10 to 15mm space between unit ceiling and ceiling slab.

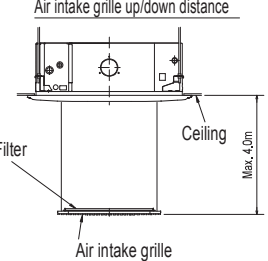
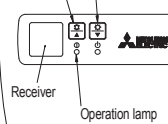
In case of wired remote controller : PLP-6BA / PLP-6BAMD



In case of auto-grille : PLP-6BAJ

In case of wireless remote controller : PLP-6BALCM Auto grille

Emergency operation switch<Cooling>and Emergency Up/Down switch<Up>
Emergency operation switch<Fan mode> and Emergency Up/Down switch<Down>



- Note1. Please choose the grille from a standard grille, auto-grille.
- As for drain pipe, please use VP-25 (O.D. φ32 PVC TUBE). Drain pump is included. Max. lifting height is 850mm from the ceiling.
- As for suspension bolt, please use M10 or W3/8. (Procured at local site)
- Electrical box may be removed for the service purpose. Make sure to slack the electrical wire little bit for control/ power wires connection.
- The height of the indoor unit is able to be adjusted with the grille attached.
- For the installation of the optional multi-functional casement.
 - Requires E or more space between transom and ceiling for the installation.
 - Add 135 mm to the dimensions * marked on the figure.
- When installing the branch ducts, be sure to insulate adequately. Otherwise condensation and dripping may occur. (It becomes the cause of dew drops/Water dew.)
- As for necessary installation/service space, please refer to the left figure.

Models	①	②	A	B	C	D	E
PL-P18BAK	Refrigerant pipe ...φ6.35	Refrigerant pipe ...φ12.7	241	258	80	74	400
	Flared connection ...1/4F	Flared connection ...1/2F					
PL-P24BAK	Refrigerant pipe ...φ9.52	Refrigerant pipe ...φ15.88	241	258	80	74	400
	Flared connection ...3/8F	Flared connection ...5/8F					
PL-P30BAK PL-P36BAK PL-P42BAK PL-P48BAK	Refrigerant pipe ...φ9.52	Refrigerant pipe ...φ15.88	281	298	85	77	440
	Flared connection ...3/8F	Flared connection ...5/8F					